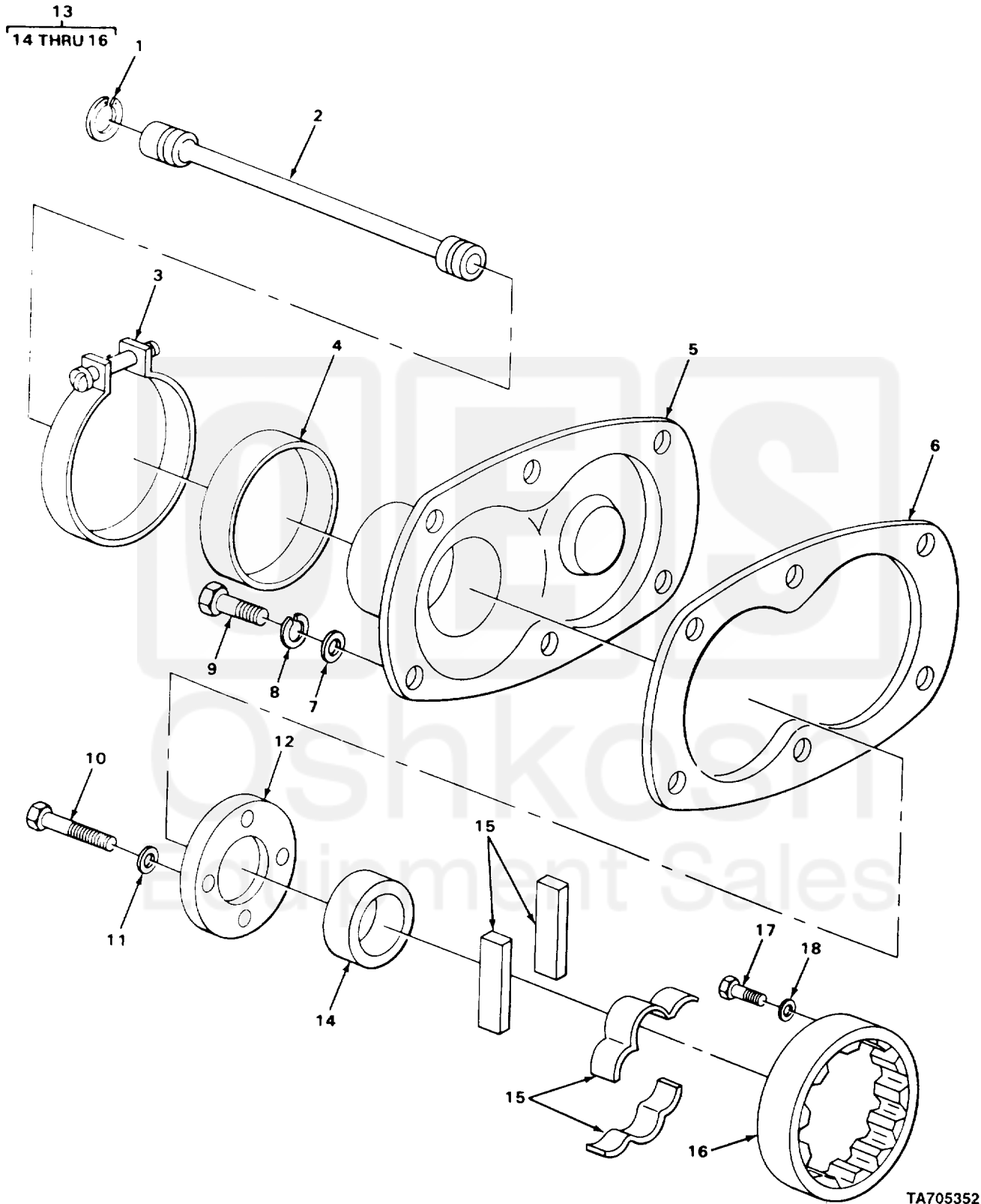


SECTION II

TM 10-3930-242-24P



TA705352

FIGURE 26. BLOWER ASSEMBLY (LOWER HALF) AND COUPLINGS.

| (1)<br>ITEM<br>NO | (2)<br>SMR<br>CODE | (3)<br>CAGEC | (4)<br>PART<br>NUMBER   | (5)<br>DESCRIPTION AND USABLE ON CODES (UOC)                                 | (6)<br>QTY |
|-------------------|--------------------|--------------|-------------------------|--|------------|
|                   |                    |              |                         | GROUP 0305 SUPERCHARGER, BLOWER,<br>TURBOCHARGER, OR ALTITUDE<br>COMPENSATOR |            |
|                   |                    |              |                         | FIG. 26 BLOWER ASSEMBLY (LOWER HALF)<br>AND COUPLINGS                        |            |
| 1                 | PAHZZ              | 96906        | MS16625-1077            | .RING,RETAINING BLOWER DRIVE SHAFT   | 1          |
| 2                 | PAHZZ              | 72582        | 8922967 AND 8922<br>970 | .SHAFT,SHOULDERED BLOWER DRIVE   | 1          |
| 3                 | PFHZZ              | 96906        | MS35842-13              | .CLAMP,HOSE BLOWER DRIVE   | 1          |
| 4                 | PAHZZ              | 72582        | 5180445                 | .SEAL,PLAIN BLOWER DRIVER COVER PART<br>OF KIT P/N 5199792                   | 1          |
| 5                 | PAHZZ              | 72582        | 5119429                 | .COVER,ACCESS DRIVE COUPLING   | 1          |
| 6                 | PAHZZ              | 72582        | 5119433                 | .GASKET PART OF KIT P/N 5199792 PART<br>OF KIT P/N 5198683                   | 1          |
| 7                 | PFHZZ              | 96906        | MS27183-14              | .WASHER,FLAT BLOWER DRIVE COUPLING<br>MTG                                    | 6          |
| 8                 | PFHZZ              | 96906        | MS35338-8               | .WASHER,LOCK BLOWER DRIVE COUPLING<br>MTG                                    | 6          |
| 9                 | PAHZZ              | 96906        | MS18154-58              | .SCREW,CAP,HEXAGON H BLOWER DRIVE<br>COUPLING MTG                            | 6          |
| 9                 | PFHZZ              | 96906        | MS90725-68              | UOC:CQK,U72<br>.SCREW,CAP,HEXAGON H DRIVE COVER<br>PLATE MTG                 | 6          |
| 10                | PAHZZ              | 24617        | 9409221                 | UOC:CMQ,CMQ,U73,U74<br>.BOLT,SELF-LOCKING DRIVE COUPLING<br>RETAINER MTG     | 4          |
| 11                | PFHZZ              | 72582        | 5126236                 | .PILOT,BLOWER DRIVE PART OF KIT P/N<br>5198683                               | 4          |
| 12                | PAHZZ              | 72582        | 5119466                 | .RETAINER,DRIVE COUP BLOWER DRIVE<br>COUPLING                                | 1          |
| 13                | PAHZZ              | 725852       | 8922969                 | .COUPLING,SHAFT,FLEX BLOWER DRIVE  | 1          |
| 14                | PFHZZ              | 72582        | 8922970                 | ..CAM COUPLING   | 1          |
| 15                | PAHZZ              | 72582        | 5196614                 | ..SPRING,FLAT,SET COUPLING   | 1          |
| 16                | PFHZZ              | 72582        | 5119412                 | ..SUPPORT,BLOWER DRIV COUPLING   | 1          |
| 17                | PAHZZ              | 72582        | 9409018                 | .BOLT,SELF-LOCKING GEAR MTG  | 1          |
| 18                | PAHZZ              | 72582        | 5116316                 | .WASHER,FLAT GEAR MTG PART OF KIT<br>P/N 5198683                             | 1          |

END OF FIGURE

